



# The 'Better Training for Safer Food' initiative

**BTSF INFO-DAY**

**Luxembourg, 17 January 2019**



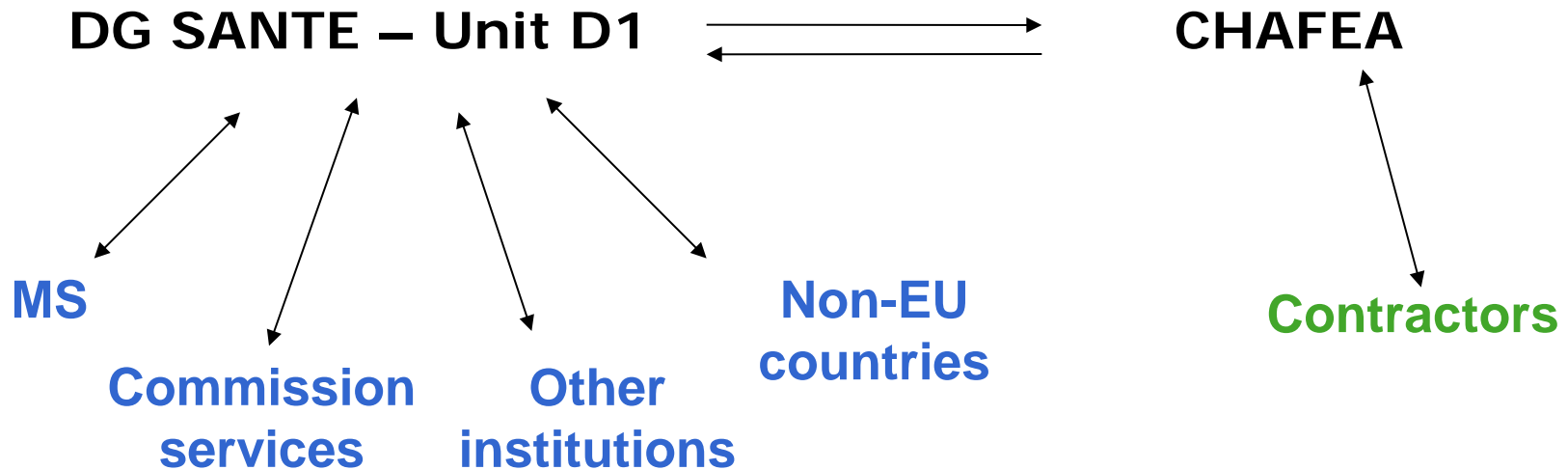
European  
Commission

# Background and evolution

# What is BTSF?

- 
- A DG SANTE training initiative for EU and non-EU country official control staff
  - Launched in 2005
  - Covering food safety, plant health and animal health and welfare
  - Aims: High levels of competence and awareness of EU rules leading to harmonised approach to control systems

# Two main actors





# BTSF: more than 10 years already

- Set up in 2005 on the basis of the OFFC Regulation
- Modest beginnings in 2006

## NOW

- at the **very heart** of the DG SANTE mission
- a **key player** in SPS enforcement
- a solid **capacity building programme** in the EU and across the world



# BTSF in figures from 2006 to 2017

## A comprehensive programme

- More than 1700 events
- Around 68.000 participants
- Budget of approx. € 155 million

Approx. 20% of this activity covers non-EU countries

# BTSF today

- A comprehensive programme
- Based on a traditional learning model with
  - (Regional) training workshops where tuition is provided by EU experts
  - Ad hoc assistance missions (STMs) where an EU expert is seconded to a specific country to solve a specific issue

**= Face-to-face training courses**



# Regular assessment outcomes

- **Conclusions**

- the current training model (key performance indicators and robust cost /benefit model) is cost-effective,
- A blended training model will enable meeting more efficiently the objectives of BTSF,
- Greater efforts on dissemination will increase BTSF impacts.

- **BTSF tomorrow**

- Engaging in a more blended approach
- Reinforcing dissemination efforts
- Launch of a BTSF Academy





# Towards a blended learning model

## General features

- To continue with face-to face training (advanced courses, practical courses, trainers training, etc.)
- To diversify the training offer by including new technologies (e-learning, tutorials, etc.)

## Actions already developed or under development

- 10 E-learning modules now readily available for EU MS officials
- Video recording of the most interesting sessions during face-to-face training



# Reinforcing dissemination efforts

- Better selection of participants (e.g. involvement of national trainers)
- Systematic mandatory information sharing process upon return (questionnaire)
- Possible development of dissemination plans

**= key factors in training success**



# Organisation of training activities under BTSF



## Main features

- Training is organised by external contractors
- Training consists of workshops and/or secondment of individual experts
- Tuition by experts from the Commission, Member States, non-EU countries and international organisations



## BTSF principles

- Not to replace initial training for inspectors
  - ⇒ **MS responsibility for initial training**
- To complement initial training in areas where difficulties exist at EU level
  - ⇒ **EU message / Mix of tutors team**
- To favour knowledge sharing and networking to increase compatibility of control procedures throughout the EU
  - ⇒ **Mix of tutors and participants**
- To follow a train-the-trainer approach
  - ⇒ **Dissemination is a key factor for BTSF success**



# Requested training services

- To recruit a qualified tutoring team
- To develop a training programme meeting the objectives of the course and the requested technical coverage
- To ensure a balanced mix of theoretical and practical sessions using interactive learning methodologies
- To develop the training material
- To promote the course and ensure appropriate participation through NCP network
- To identify appropriate training locations and organise all logistical aspects for participant attendance
- To test the understanding of the trained subjects and measure the impact of the training



# BTSF monitoring and supervision

- At the end of each training day/seminar
  - Participants (Satisfaction + Learning)
  - Commission observers
- Some months after each training seminar
  - Participants (Behaviour + Dissemination)
- During the life of each training programme
  - Interim reports
- At the end of each training programme
  - MS National Contact Points, Commission services
- Regular general ex-post assessment



European  
Commission

# Running BTSF Calls

## Chafea/2018/BTSF/05-07





# *Principles and methods of Risk Assessment in the food chain (05)*

## *General features (2.050.000 €, two phases)*

- *16 four-day courses (two on each of the 8 topics)*
- *320 participants (around 20 per course)*

## *Objectives*

- *To indirectly contribute to the harmonisation of risk assessment approaches as well as to building trust amongst Member States' authorities in each others' risk assessments,*
- *To disseminate best practices for risk assessments*

## *Target*

- *scientists from public institutions involved in food chain risk assessment and focused on 8 different fields (mainly EU MS, some Non-EU countries)*



# *Principles and methods of Risk Assessment in the food chain (05)*

## *Specific features*

- Course 1: Chemical risk assessment in food;*
- Course 2: Microbiological risk assessment;*
- Course 3: Pest and plant protection risk assessment;*
- Course 4: Risk assessment in nutrition;*
- Course 5: Risk assessment in biotechnology (e.g. GMO, synthetic biology);*
- Course 6: Risk assessment applied to animal health and welfare;*
- Course 7: Environmental risk assessment;*
- Course 8: Evidence collection, management and integration.*



## *Plant Health Controls (06)*

### *General features (2.560.000 €, two phases)*

- *14 three-day courses*
- *415 supported participants in total (29-30 participants per course)*

### *Objectives*

- *Provide for a common and unambiguous understanding of EU legislation and its' correct and harmonised implementation across the EU,*
- *Allow the exchange of information and experience amongst MS and increase the efficacy of plant health services.*

### *Target*

- *Officials involved in general planning and policy making as well as for senior field inspectors involved in the practical implementation of the legislation and controls, and those in direct contact with producers/stakeholders/importers.*



## **Plant Health Controls (06)**

### **Specific features**

**4 x Course 1:** *Training for plant health import control staff on the EU plant quarantine regime for imports,*

**2 x Course 2:** *Training for plant health import control staff on the EU plant quarantine regime for non-timber forest products;*

**8 x Course 3:** *Training for plant health control staff on the identification and control of outbreaks of harmful organisms, divided into two sub-fields:*

*4 a) agriculture and horticulture,*

*4 b) forestry and general environment, including urban areas.*



# *EU rules applicable to the authorisation and placing on the market of Novel Foods produced in non-EU countries (07)*

## *General features (1.960.000 €, 2 phases)*

- *9 three-day courses*
- *300 supported participants in total (30-35 participants per course)*

## *Objectives*

- *to develop cooperation activities on novel food with non-EU trade partners to further raise awareness and contribute to a better understanding and more efficient use of existing EU rules applicable to the authorisation and placing on the EU market of novel foods by the competent authorities and other stakeholders in non-EU countries.*

## *Target*

- *Officials from competent authorities in non-EU countries verifying compliance with rules applicable to placing of novel food on the EU market*



# Thank you for your attention

[https://ec.europa.eu/food/safety/btsf\\_en](https://ec.europa.eu/food/safety/btsf_en)

<http://ec.europa.eu/chafea/food/index.html>